

# Translation of Original Operating Instructions

**pewag winner prosecure**

## pewag winner PLGW-PSA Supreme / PLGW-PSA Basic

This operating instruction is part of the product. It has to be made available to the operator for the duration of its service life and has to be passed on to the next owner or operator along with the product. This product and its instruction manual may only be resold in countries where English is the national language. The existing documentation is subject to a continuous improvement process; only the most recent version is deemed valid. It is available as a download on [www.pewag.com](http://www.pewag.com).

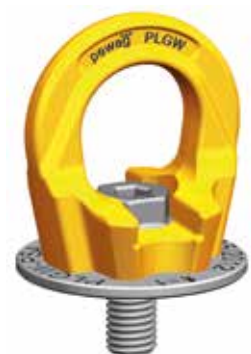
These products are designed considering this manual as well as the national regulations for use with personal protective equipment only. They may only be used, if the user manual was carefully read and understood completely.

**The colour-highlighted text in this instruction manual indicates a potentially hazardous situation which, if not avoided, could result in death or serious injury. Please read through the additional advice carefully.**

Document Version:  
4097846\_BA\_PLGW-PSA\_R1.0\_ENG  
Release Date: 2023-09-01



pewag winner PLGW-PSA Supreme



pewag winner PLGW-PSA Basic

This operating manual is valid for:  
**pewag winner PLGW-PSA Supreme**  
**pewag winner PLGW-PSA Basic**  
Anchor point for personal protective equipment

Size	Number of persons to secure
Metric-thread M12	Max. 1 Person
Metric-thread M16	Max. 2 Persons
Metric-thread M20	Max. 2 Persons



**Please read this operating manual carefully before using the product. Pay attention to the sections on Safety and Mounting. You are only allowed to use this product once you have fully understood all points in this manual.**

## Contents

1. Safety Guidelines
2. Intended use
  - 2.1. Identification
  - 2.2. Limitations of use
  - 2.3. Foreseeable improper operation
3. Mounting instructions
  - 3.1. General
  - 3.2. Safety measures to be taken by the user
  - 3.3. Residual risks
  - 3.4. Mounting
  - 3.5. Demounting
4. Maintenance, inspection, repairs
  - 4.1. Inspection
  - 4.2. Elimination criteria
  - 4.3. Accident and incident procedure
  - 4.4. Maintenance
  - 4.5. Repairs
5. Storing
6. Decommissioning
7. Declaration of incorporation

## 1. Safety Guidelines



### WARNING

**An improperly mounted or damaged anchorage point or improper use may cause accidents that lead to severe injuries and/or death! Damaged anchorage points (see maintenance instructions) may fail even during normal conditions of use. Such anchorage points may not be used.**

- Only specially trained personnel are allowed to use this product. They must be familiar with the relevant norms and the country-specific regulations.
- The user of this product must be in good health. He is not allowed to be under the influence of drugs, alcohol or medication.
- Please make sure that in the event of an emergency, a plan with rescue measures is available highlighting all possible emergency situations.
- Before use, make sure the product is in good working order (not deformed, no breaks). Anchorage points must be rotatable (aligned in the direction of pull). It is not allowed to make changes or modifications to the product.
- Various repair procedures must only be undertaken in accordance with pewag's prescribed instructions.
- Loading has only to take place in the stated direction (image 1 under section 2 of this manual) with the maximum number of people according to table 1 and

taking into consideration the operating conditions stated in section 2.

- This product may not be used for the lifting of loads.
- Only use the correct connecting elements for the anchorage points which are in accordance with EN362. Take into account all individual instruction manuals of each individual element and the safety equipment being used. Equipment parts that are not compatible are able to compromise the safe and correct function of the whole system.
- Only certified body harnesses with fall-impact-absorbers pursuant to EN 355 must be used that, in the event of a fall, limit the forces to 6kN.
- Anchorage points that have been stressed by a fall must be immediately taken out of operation and should only be used once a qualified person has explicitly agreed to the full functioning of the equipment in writing.
- It is important for safety reasons, that the position of the anchorage point has been correctly chosen, so that in the event of a fall, the height of the fall is reduced to a minimum
- Mount the anchorage point thus, that in the event of a fall, no impact on the surface or with any other obstacle can occur.

Type	Number of people to secure	Tightening torque*
PLGW PSA M12	Max. 1 Person	20 Nm
PLGW PSA M16	Max. 2 Persons	50 Nm
PLGW PSA M20	Max. 2 Persons	100 Nm

\*if permanently connected

Table 1

## 2. Intended use

**Purpose:** The pewag PLGW-PSA serves as an anchorage point in the formation of an anchorage system of Type A according to EN 795:2012 or CEN/TS 16415:2013 (PLGW-PSA M16 or M20 for securing more than one person) and may be used in combination with Type B.

Furthermore the anchorage points may be used in accordance with OSHA standards (1926.502; 1926.140) and EN 50308 (wind turbines).

**Load:** Loading has only to take place in the stated direction (image 1) with the maximum number of people according to table 1 and taking into consideration the operating conditions.

**Application Temperature:** The long-term permitted ambient temperature must be between -40 °C and +280 °C (-40 °F to 536 °F).

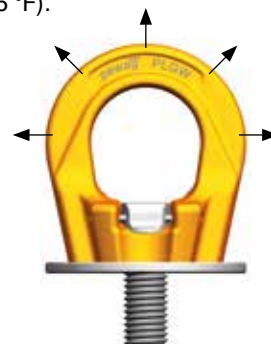


Image 1: permissible pull directions that occur when used correctly.

**Impacts:** The anchorage point is designed to withstand impacts and swinging expected in the event of a fall.

**Other:** Use only original parts for the assembling of the anchorage point. The ring is 360° rotatable and must be aligned in the direction of pull before loading.

## 2.1 Identification

Each pewag PLGW-PSA has been stamped with the thread size and a pictogram that shows the number of permissible users allowed. Furthermore each anchorage point is stamped with its own individual serial number. Image 2 shows the exact identification details on the anchorage point.

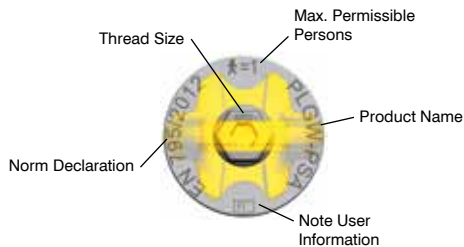
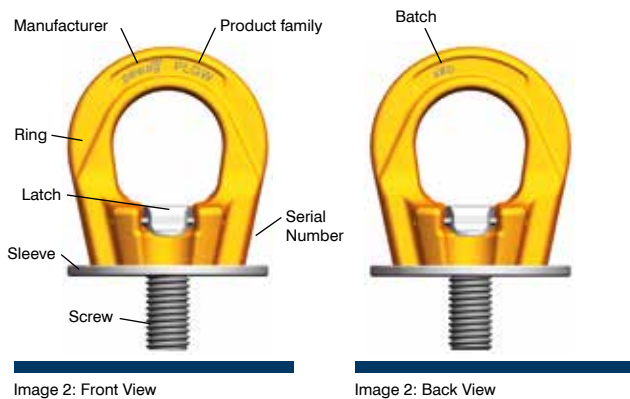


Image 2: Identification on Sleeve and Screw.  
Component description and location of identification details on product.

## 2.2 Limitations of use

- PLGW-PSA anchorage points are not to be used in areas with highly corrosive influences (e.g. sewage or chemicals etc.). They must not be exposed to acids and alkalis or their fumes. Please consult our technical service on advice for using the products in aggressive environments.
- The anchorage points must not be used over edges or corners.
- The anchorage points must not be exposed to permanent stress.
- The hanged-in connecting elements must move freely in the ring.
- Anchorage points must not be used permanently outdoors
- PLGW-PSA anchorage points must not be used for the lifting of loads.



### WARNING

The information contained in this operating manual is based on the assumption that no particularly hazardous conditions apply. In such cases, please contact pewag to determine the permissibility of the application and the degree of danger.

## 2.3 Foreseeable improper operation

- Operation by unskilled personnel.
- Operation by those who do not understand the language used within this manual and therefore do not fully understand what they are reading.
- Attaching to objects where no instruction manual or strength verification is present or available.
- Attachment of inappropriate connecting elements.
- Attaching connecting elements where no instruction manual or inspection based on the norms mentioned herein is present or available.

## 3. Mounting Instructions

### 3.1 General

- Mounting must only be carried out by trained personnel.
- The part of the structure on which the PLGW-PSA anchorage point is mounted must withstand a load of at least 14 kN (per person) without deformation (proof of safety) in accordance with EN 795 (or in accordance with CEN/TS 16415 if it is used by two persons at the same time). Consider higher values such as (e.g., 22.2kN per OSHA 1926.502(d)(15)).
- PLGW-PSA anchorage points are to be screwed into steel or cast steel parts only. Applying to other materials (as light metals, plastic, concrete, etc.) is not permissible
- Choose the location of the anchorage point so that in the event of a fall, no impact on the surface or with any other obstacle can occur.
- Mount the anchorage point so that you are able to reach the connecting elements with ease. The attachment points must be affixed in such way that no dangerous points (bruising, shearing, trapping or bumping) are produced endangering the user.
- Only original pewag parts are allowed to be used – recognisable by the stamping (batch identification mark, thread diameter etc.).
- The delivery condition is not allowed to be changed. It is not permitted to perform additional welding, heat and/or surface treatments with material-damaging effects (e.g. electro galvanised). The screws are not allowed to be shortened.
- Only use faultless anchorage points.
- Used anchorage points must be checked according to the maintenance instructions prior to each use.

## 3.2 Safety measures to be taken by the user

Please refer to the operational limitations and the maximum number of permitted person according to table 1. Make sure that no unauthorised persons have access to the anchorage system during the entire duration of operation.



### WARNING

**Make sure that there is no danger of falling before removing the connecting element.**



Image 3: Position ,A' – both latches are touching the screw. Only permitted during mounting and demounting.



Image 4: Position ,B' – none of the latches is touching the screw. The anchoring point is only ready to be used in this position.

## 3.3 Residual Risks

Overloading by not respecting the maximum number of persons or due to undue environmental influences (temperature etc.). Wrong adjustment of connecting elements can also lead to the failing of the anchorage points, as well as using unauthorised or damaged body harness' parts (ropes, fall-impact-absorbers, tether).

## 3.4 Mounting

- The mounting surface must be even and have a minimum diameter of the width of the anchorage point. The thread hole should be in the middle and at a right angle with enough depth so that the screw can be fully screwed in (by blind holes).
- Clean the threaded hole prior to each use and check for damage.
- The minimum screw length is as follows:  
1 x M in steel  
1,5 x M in cast steel  
(M = thread size, e.g. M20 = 20 mm)
- Additional elements (such as washers) between the anchorage point and the anchorage system are not permitted.
- Prior to each use, ensure that the lifting point is fully screwed in and that the contact surface is flush with the load.

### 3.4.1 PLGW-PSA „Supreme“ with latches

- The anchorage point PLGW-PSA has an easy system for tool-less mounting.
- To screw in the anchorage point, fold the latches up so that they completely lie flat on the side of the screw (position A – see image 3). The latches are held in position using a spring.

- Screw the anchorage point into the anchorage system until the underside lies completely flat.
- Tighten the anchorage point by hand.
- Fold the latches back down into position ,B' as seen in image 4. Even in this position the latches are held by a spring. Before hanging the connecting elements, make sure that the latches are really in position ,B' and are not touching the screw.

### 3.4.2 PLGW-PSA „Basic“ without latches

- The anchorage point PLGW-PSA does not have a tool-less mounting system. Screwing and unscrewing requires a commercial Allen key.

If the anchorage point is to remain permanently connected to the anchorage system, tighten the anchorage point using the appropriate tool and tighten to the torque specified in table 1, securing the thread if needed (vibrations) with a liquid thread protection (e.g. Loctite). After mounting, avoid improper stress by turning the ring to the direction of the expected direction of pull.

## 3.5 Demounting

Demounting is carried out by folding the latches to position A (image 3) and unscrewing the anchorage point. PLGW-PSA “Basic” version without the latches, the demounting requires an Allen key. Store the anchorage point as highlighted in section 5.

Protect the thread of the anchorage system from damage and contamination by using appropriate measures.

## 4. Maintenance, inspection, repairs



### WARNING

The safety of the user is contingent upon the effectiveness and durability of the

equipment used. For this reason, ensure that inspections are performed on a regular basis. Damaged anchorage points may fail during normal conditions of use.

- This product must be checked by trained personnel at least annually in accordance with all the manufacturer information. The time period can be shorter with regards to the operational conditions and legal regulations.
- During inspection, all parts need to be checked for damages that could negatively influence the safety and function.

**Trained personnel is someone who**, in view of his or her expert training and experience, has sufficient knowledge in the field of personal fall protection equipment and is sufficiently familiar with the relevant norms and national regulations so that he/she can judge the safe-for-working state of the product being used.

### 4.1 Inspection

**Consider the following points before each usage:**

- Correct selection of product size based on the number of persons to secure (see table 1).
- Anchorage points are inspected, are in good condition and free from defects, especially the screw and ring
- The mounting surface must lie completely flat on the surface after mounting.
- During operation, the latches have to be in position ‚B‘ (see section “Mounting” in this instruction manual)
- The ring of the lifting point used must be aligned with the expected load direction.

**Regular Inspection:**

- Regular inspection must be performed by the manufacturer or by trained personnel under strict compliance with the manufacturer information.

### 4.2 Elimination criteria



### CAUTION

If there is any doubt on the correct functioning/safety of the anchorage

point, it must be discarded!

- Breakage, deformation, sharp notches and/or cracks of any kind.
- If there are any signs of high heat influences (e.g. black colouration or burnt coating).
- Noticeable damage of the thread which could influence the functionality.

- Unreadable markings.
- Wear or excessive corrosion; when a permissible dimensional change of more than 10 % has been exceeded
- If, after mounting the anchorage point, the ring cannot be rotated with ease.

### 4.3 Accident and incident procedure

If the anchorage point ring’s connecting elements become jammed, do not use force in order to avoid further damage. If the anchorage point is malformed (e.g. due to overloading or after a fall) or other exceptional occurrences, the anchorage point must be immediately removed from operation and a qualified member of personnel should inspect it and/or repair it.

### 4.4 Maintenance

- Clean all parts with a damp cloth. Leave the anchorage point to dry naturally.
- Contamination of the thread can be cleaned using a wire brush.

### 4.5 Repairs

- Repairs should only be carried out by the manufacturer or a qualified member of personnel.
- If the markings have become illegible, a qualified member of personnel can replace the screw and sleeve.
- Damaged parts should only be replaced by new, original spare parts.
- Welding and heat treatment are forbidden.
- The inspections and repairs need to be fully documented and remain with the product for the duration of its operating life. A documentation reference sheet can be found in the appendix of this manual.

## 5. Storing

Store the anchorage point after it has been cleaned, dried and protected against corrosion (e.g. lightly oiled). The thread should be protected using an appropriate protective cap. During storage or transportation, make sure the product is not exposed to corrosive, thermal or mechanical influences.

## 6. Decommissioning

This product mainly consists of parts made of metal and is 100 % recyclable. Bring the product at the end of its service life to the scrap metal recycling plant.

# 7. Declaration of incorporation

**STRONG IS NOT ENOUGH**  
www.pewag.com

## Translation of the original declaration of incorporation

within the meaning of EU regulation 2016/425

The manufacturer,  
**pewag austria GmbH, A-8605 Kapfenberg, Mariazellerstraße 143 a**  
 of the product  
**pewag winner PLGW-PSA Anchor point for personal protective equipment**

- Herby declares that the following health and safety requirements according to Appendix II of the regulation specified above are being complied with: 1.1.; 1.2.; 1.4.; 3.1.2.2.
- The special technical documents according to Appendix III have been compiled.
- The special technical documents referred to above shall be forwarded to the competent authorities in electronic form.

**Authorised representative for the preparation of the technical documentation:**  
 Ranko Ivanic, pewag austria GmbH, A-8605 Kapfenberg, Mariazellerstraße 143 a

**Applied harmonised standards, in particular:**  
 EN 795:2012: Personal fall protection equipment. Anchor devices.  
 EN 365:2004: Personal protective equipment against falls from a height.  
 General requirements for instructions for use, maintenance, periodic examination, repair, marking and packaging

**Other applied technical standards and specifications:**  
 DIN CEN/TS 16415: Personal fall protection equipment. Anchor devices.  
 DGUV GS-HM-38: Principles for the testing and certification of anchor points.  
 OSHA 1910.140(c)(13): Personal fall protection systems - anchorages  
 OSHA 1926.502(g)(16): Fall protection systems criteria and practices - anchorages  
 EN 50308 section 4.5: Wind turbines - Protective structures - anchorage points

The notified body WUU, Pikartská 1337/7, 716 07 Ostrava-Radvanice, Czech Republic;  
 ID number 1019 has performed the type examination and issued the type examination certificate:

Typ/Size	PLGW-PSA-M12	PLGW-PSA-M16	PLGW-PSA-M20
Certificate number:	3076-268/Q/2020	3076-269/Q/2020	3076-270/Q/2020

**The product is subject to the following conformity assessment procedure:**  
 Conformity with the type on the basis of quality assurance measures related to the production process (module D).

**Notified body for the examination of the quality assurance system according to Appendix VIII:**  
 Certification body of the TÜV SÜD Landesgesellschaft Österreich GmbH  
 Campus 21 Europaring A04301, A-2345 Businesspark, Wien Süd, Austria

Commissioning of the product is forbidden until it has been ensured that, wherever applicable, the anchor device to which the product specified above is attached complies with the regulations of standard EN 795:2012 and/or DIN CEN/TS 16415.

Stefan Duller  
 General Manager

Kapfenberg, 01-09-2023  
 pewag austria GmbH, A-8605 Kapfenberg, Mariazeller Straße 143

**EC-type Examination Notified Body:**  
 Name: VVUU a.s.  
 Address: Pikartská 1337/7, Ostrava-Radvanice 716 07,  
 Czech Republic  
 Identification number: IC: 45193380

Equipment Documentation		
Product	Anchor point for personal protective equipment	Serial Number:
Type	PLGW-PSA Anchor point	
Manufacturer	<b>pewag austria GmbH, A-8041 Graz, Gaslaternenweg 4</b> Phone: +43 (0) 50 50 11-0, Fax: +43 (0) 50 50-100 office@pewag.com, www.pewag.com	Bought from:
Date of Commissioning:		Purchase Date:
Other Information:		

Regular Inspection and Maintenance Procedure				
Date	Reason Why (regular inspection or maintenance)	Discernible damage, maintenance carried out and further details	Name and signature of inspector	Date of next inspection

**pewag austria GmbH**  
 A-8041 Graz, Gaslaternenweg 4, Phone: +43 (0) 50 50 11-0, Fax: +43 (0) 50 50 11-100  
 office@pewag.com, [www.pewag.com](http://www.pewag.com)

Technical changes and misprints are subject to alteration.