

# Information Leaflet

## pewag winner profilift

### PLGW pewag winner profilift gamma basic

The lifting point PLGW basic is a simplified version of the successful product PLGW from pewag. With the same benefits as the pewag PLGW supreme in terms of measurement, load capacity and application, the pewag PLGW basic differs solely in the assembly: mounting and removing requires the use of a hexagon Allen wrench. The PLGW basic therefore is applied in situations where the attachment point is to remain permanently at the load or frequent assembly and disassembly is not required.

#### Further benefits of the lifting point PLGW basic compared to a conventional DIN 580 eye bolt are:

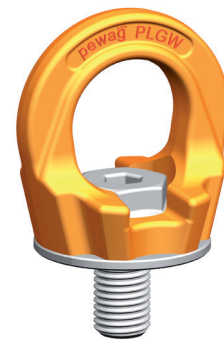
- Same thread size but much higher working load limit
- Rotatable 360° – can be aligned in the direction of pull
- 4-fold safety against breakage in all directions
- 100% crack tested screw
- Chrome VI-free corrosion protection

Each lifting point is marked with the allowed WLL, the thread size and an individual serial number that allows traceability. The table with the load capacities depending on the different methods of lifting, number of legs and angle of inclination is part of the user manual, which is added to each lifting point.

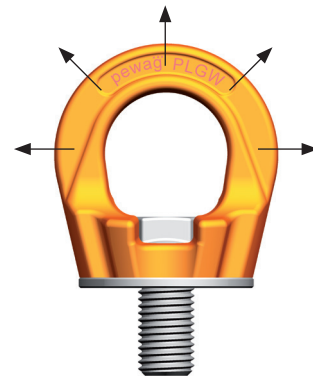
This new lifting point, as well as the already well-known pewag winner profilift alpha (PLAW) and pewag winner profilift beta (PLBW), has been developed and tested according to the valid technical standards (MSV 2010, MD 2006/42/EC, BGR 500, EN 1677, etc).

Special lengths and special threads are available on request.

For more details, please reference our user manual or our website [www.pewag.com](http://www.pewag.com); as well as the detailed instruction manual.



PLGW basic



Possible directions of pull