

Leaflet

pewag winner profilift

PLGW pewag winner profilift gamma supreme

pewag winner profilift gamma supreme – tighten by hand, then align in the load direction, a lifting point that has been developed and produced with the new standards in mind. The patented system has proven itself from the beginning.

It is 360° rotatable, contains a patented and interchangeable special screw, which is 100% crack-tested as well as covered with a chrome VI-free finish-protection against corrosion and marked with WLL and thread size. Each lifting point is marked with an individual serial number, that allows traceability. pewag winner profilift gamma is optionally also available with a UNC-thread.

The table with the load capacities depending on the different methods of lifting, number of legs and angle of inclination is a part of the user manual and packed together with each lifting point.

Tool-free assembly and disassembly

The latch in pos.1 does not have any contact with the screw (picture 1).

- The latch is kept in position with a patented spring
- Eye bolt is rotatable

The latch in pos. 2 has contact with the screw (picture 2).

- The latch is kept in position with a patented spring
- Eye bolt is not rotatable i.e. the fastening torque is transmitted to the screw and thus the eye bolt can be (re)assembled

Permissible usage

Load capacity acc. to the inspection certificate table of WLL in the shown directions of pull – see picture 3.

- Adjust the lifting point in the permitted load direction before loading
- Loadable with a 4-fold safety under break in all directions

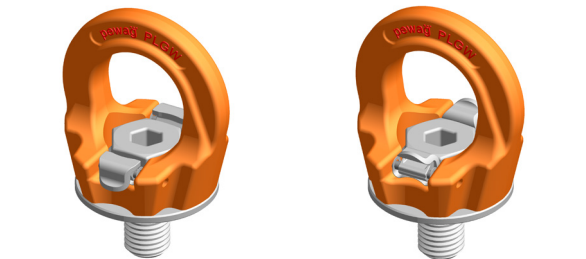
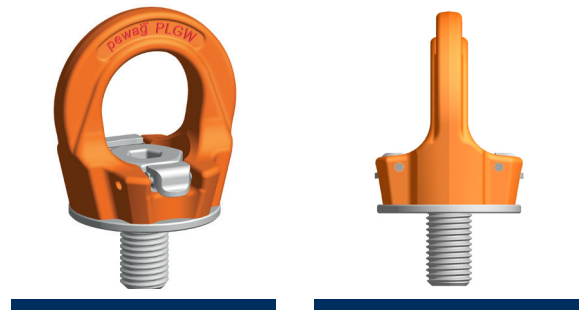
Non permissible usage

Make sure when choosing the assembly that improper loading can not arise eg if:

- The direction of pull is obstructed
- Direction of pull is not in the foreseen area (see picture 4)
- Loading ring rests against edges or loads

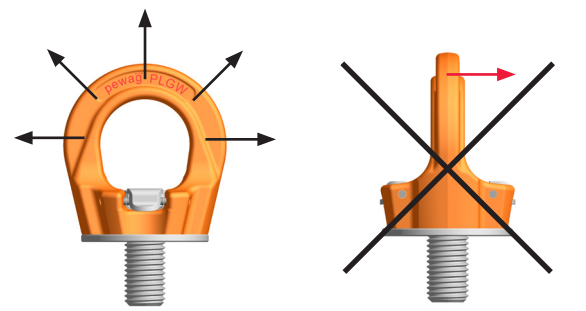
For more details please reference our user manual.

Special lengths and special threads available on request.



Picture 1

Picture 2



Picture 3

Picture 4